



THE ALL NEW
TIVOLI
ILOVIT



SSANGYONG



STYLISH & VERSATILE

The new Tivoli has a unique blend of style with practicality, fun with versatility, and comfort with technology – all in a modern and updated package.

Whatever you need on your journey – bikes, golf clubs or luggage for five – Tivoli has the answer; the perfect SUV for those who want to downsize without compromise.



STYLED TO EXCITE

SsangYong follow a design theme called 'nature, born 3 motion' which can sound a little strange to Europeans, but it draws from the combination of Korea's mountainous, wooded terrain together with the subtleties of eastern aesthetics.

The result is a stylish SUV whether on the street or in the country. New Tivoli's elegant shape has great proportions, and features a revised grille, updated bonnet line and new triple LED front fog lights, topped by a swept back 'floating' roofline reminiscent of premium SUVs.

Finished with details such as projection headlamps, stylish LED positioning lights front and rear, LED repeaters on the door mirrors (Ultimate), smart 18" alloys (Ultimate) and clean purposeful lines, new Tivoli is an SUV with a distinctive road presence.



SPACIOUS & REFINED

New Tivoli redefines the standard for interior style and trim for a small SUV. Award-winning comfortable front seats, enough rear seat space for three passengers, a chunky D-cut steering wheel that looks and feels good and a new fascia that's ergonomic, modern and purposeful, come together to create an upmarket ambience.

That ambience is carried through to the upholstery with Ultimate models featuring leather trim and front seat heaters. Entry level EX models are trimmed with deluxe fabric whilst ELX and Ventura models feature smartly designed leather-look and cloth seats, also with front seat heaters. This gives Tivoli an interior usually found in vehicles at twice the price and makes travelling in a Tivoli very special indeed.



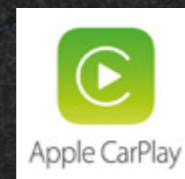


INFOTAINMENT

New Tivoli features cutting-edge technology to connect you to the outside world – all models feature DAB+ for the clearest of sounds and use Bluetooth technology to connect to your phone and to stream music.

New Tivoli ELX, Ventura and Ultimate models feature a new 8" touchscreen-driven system which adds Apple CarPlay and Android Auto to connect to your phone, for navigation, music, podcasts or to make calls.

The 8" screen also helps out when reversing with ELX, Ventura and Ultimate models fitted with a rear view camera.



AN INTERIOR FULL OF FEATURES



HEATED STEERING WHEEL

Once you've experienced a heated steering wheel you'll never want to go back – essential in Korea and standard with Tivoli ELX, Ventura and Ultimate models – it's the ultimate winter must...

AIR CONDITIONING

New Tivoli EX, ELX and Ventura are equipped with manually controlled air conditioning to keep you cool whatever the weather.

However, Ultimate models feature a clever dual-zone air conditioning system which allows driver and passenger to set individual temperatures.



HEATED SEATS

You may be aware that it gets pretty cold in Korea during winter and so it's a pleasure to find a mini SUV with heated front seats (ELX, Ventura and Ultimate).



LCD SMART INSTRUMENT CLUSTER

New Tivoli Ultimate features a 10.25" high resolution LCD instrument cluster which provides driving information in a style to suite your taste. Choose from a bold digital screen with bright red graphics or a sophisticated analogue style format, the cluster provides the whole range of data you need to control your Tivoli. It also gives the means to adjust safety, comfort and technological features, ranging from the sensitivity of Tivoli's automatic braking system to the choice of welcome chime when turning on Tivoli's ignition.

In addition, there's a sophisticated trip computer on all Tivoli's that shows tyre pressures, distance to empty, distance travelled and outside temperature.



SPACE & STORAGE

New Tivoli is as practical as it is elegant.

Rear load space is amongst the best in class at 393 litres and Tivoli's width and height mean that it can comfortably accommodate three golf bags.

There's room for the essentials of life with a 2/3rds 1/3rd folding rear seat to create a range of load space options.

Ultimate models also feature a multi-purpose luggage board that can be used to divide the load space to match your needs.





TECHNICAL

New Tivoli has a choice of brand new 1.2 and 1.5 litre direct injection and turbocharged petrol engines or an uprated 1.6 litre diesel engine rated to the latest Euro 6d emissions standards means that there's a Tivoli for every requirement.

1.2 LITRE GDI-T PETROL

- 1197CC
- 128PS @ 5,000 RPM
- 230NM @ 1,750-3,500 RPM

1.5 LITRE GDI-T PETROL

- 1497CC
- 163PS @ 5,500 RPM
- 280NM @ 1,500-4,000 RPM

1.6 LITRE DIESEL

- 1597CC
- 136PS @ 4,000 RPM
- 324NM @ 1,500-2,500 RPM*

*automatic transmission

TRANSMISSIONS

Tivoli has a choice of two modern and efficient 6 speed gearboxes – manual and automatic.

Our 1.2 litre GDi-T is available as a manual only whilst the new 1.5 litre GDi-T and 1.6 litre diesel engines are available with either manual or automatic transmissions.

The automatic gearbox is a third generation unit sourced from Japanese supplier Aisin and is well proven and respected across the industry.



IDLE STOP & GO SYSTEM

ISG is standard on all new Tivoli models – it automatically shuts off the engine when at idle to enhance fuel economy and reduce exhaust emissions.

DRIVE MODE SYSTEM

Featured on new Tivoli automatic models, the driver can select one of three drive modes, Normal, Sport or Winter, to suit conditions and promote safer driving.



NOISE, VIBRATION & HARSHNESS

TECHNICAL NVH MANAGEMENT

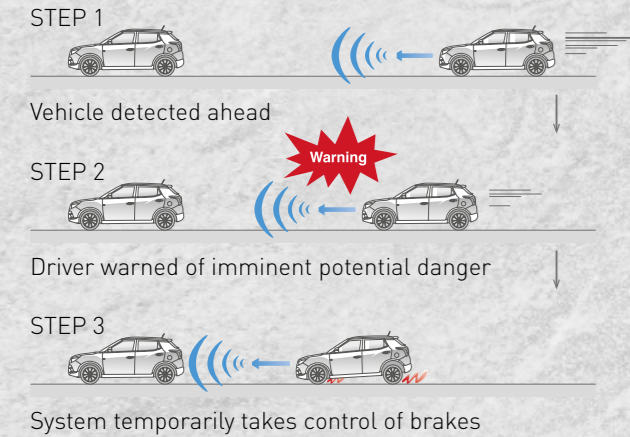
A sophisticated engine mount system, alongside powertrain and driveline suppression measures, maximises noise reduction and has allowed the new Tivoli to attain superb levels of NVH.

OPTIMISED SOUND INSULATION PACKAGE

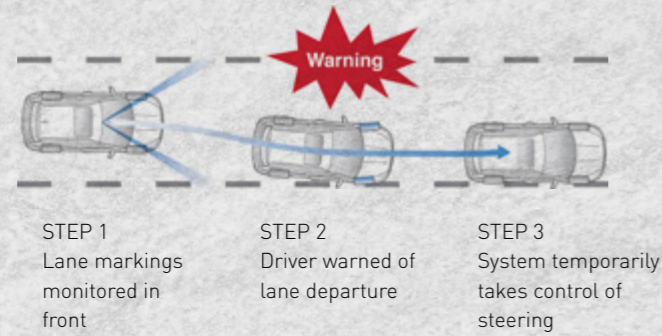
Using new construction features such as under floor damping, pillar cavity foam, and a sound absorbing roof liner, the new Tivoli is effective in isolating engine, road and exterior sounds for a quiet driving experience.

SMART SAFETY

FORWARD COLLISION WARNING AND AUTONOMOUS EMERGENCY BRAKING



LANE DEPARTURE WARNING AND LANE KEEPING ASSIST



TRAFFIC SIGN RECOGNITION

The system recognises speed limit signs and provides the driver with an on-screen warning reminder.



Evaluating data from the vehicle's on board camera, Forward Collision Warning can detect a potential collision with a vehicle, pedestrian or obstacle. If a collision appears imminent FCW will warn the driver, and if there is insufficient response Autonomous Emergency Braking (AEB) will intervene with appropriate braking force to stop the vehicle or minimise damage.



Lane Departure Warning is designed to alert the driver that the vehicle is about to deviate from a traffic lane. Lane Keeping Assist (LKA) then helps the car stay toward the centre of the lane by applying a small amount of counter-steering force.



HIGH BEAM ASSIST

Detects oncoming vehicles and dips high beams. The system also tracks the taillights of vehicles in front and dips the high beams accordingly.

PASSIVE SAFETY

HIGH STRENGTH STEEL CONSTRUCTION



STRENGTH

The basis of a vehicle's safety is its monocoque structure – both how it's made and how it responds on impact. SsangYong's engineers have made extensive use of high strength steel to construct a rigid passenger cell.



SEAT BELT PRE-TENSIONERS

In the event of a collision, the pre-tensioner immediately tightens the seatbelt over the chest and lap, ensuring the occupant is in the best possible restrained position if the airbags are deployed.

AIRBAGS

Tivoli is equipped with 7 airbags (not EX) for maximum passenger protection on impact – the most in its class. These include a driver's knee protection airbag – a feature normally found in prestige vehicles.

ISOFIX

Tivoli is equipped with ISOFIX child seat mountings to the rear outer seats to allow firm and rigid attachment.

NCAP 4 STAR RATED



ACTIVE SAFETY

Tivoli is equipped with the latest technology to assist the driver to avoid accidents.

ELECTRONIC BRAKEFORCE DISTRIBUTION / ANTI-LOCK BRAKE SYSTEM

Brake force is distributed appropriately to the front and rear wheels according to the vehicular load of persons and/or cargo.

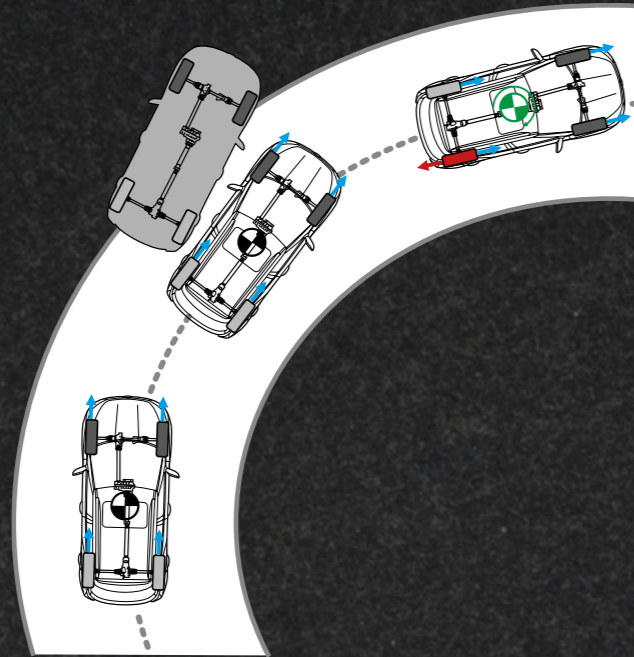
BRAKE ASSIST SYSTEM

When this electronically controlled system senses the driver emergency braking it assists by applying full braking effort automatically to reduce the vehicle's braking distance and to help avoid an accident.

TYRE PRESSURE MONITORING SYSTEM



Tivoli has tyre pressure monitoring built into its electronics. Monitored through the trip computer, each tyre is continually checked for pressure with the driver immediately warned of unsafe inflation.



ELECTRONIC STABILITY PROGRAMME

The electronic stability programme monitors road conditions and vehicular status constantly, adjusting engine output and braking whenever the driver is about to lose control. The ESP integrates the anti-lock brake system, active rollover protection, anti-slip regulation and brakeforce assist to improve Tivoli's intervention capabilities.

FINISHING TOUCHES



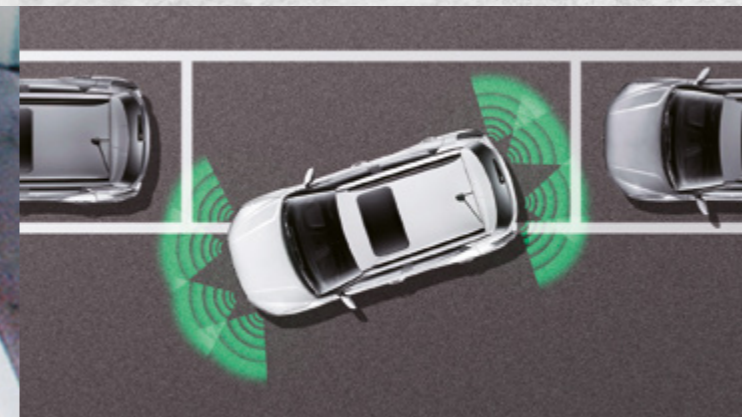
REAR VIEW CAMERA

It's always better to see clearly what's behind when reversing and Tivoli's 8" screen (ELX and above) links with a rear view camera to allow you to access the smallest of spaces.



PARKING SENSORS

Tivoli Ventura and Ultimate models feature front and rear parking sensors to add audible assistance to parking in tight spaces.



REMOTE CONTROLS

Tivoli's D-cut steering wheel has controls at your fingertips. The radio unit and phone are controlled on the left and cruise control is on the right.

CRUISE CONTROL

To maximise fuel efficiency all Tivolis are equipped with electronic cruise control. The steering wheel mounted controls allow the driver to maintain a set speed without touching the accelerator.



SMART KEY SYSTEM

Tivoli Ventura and Ultimate start at the push of a button! Once the key fob is detected, the driver's door can be opened with a button and the car started allowing the fob to be left in your pocket or bag.



EQUIPMENT

✓ Standard ✗ Not Available

	EX	ELX	VENTURA	ULTIMATE
Engine	1.2L GDI-T PETROL	1.5L GDI-T PETROL	1.2L GDI-T PETROL	1.5L GDI-T PETROL/1.6L DIESEL
Transmission	MANUAL	MANUAL	MANUAL	MANUAL/AUTOMATIC
Comfort				
Deluxe fabric seats	✓	✗	✗	✗
TPU leather look & cloth seats	✗	✓	✓	✗
Leather seats	✗	✗	✗	✓
Height adjustable driver's seat	✗	✓	✓	✓
Front seat warmers	✗	✓	✓	✓
Heated steering wheel	✗	✓	✓	✓
Stainless steel front door kick plates	✗	✓	✗	✓
D-cut steering wheel	✓	✗	✗	✗
Leather covered D-cut steering wheel	✗	✓	✓	✓
Leather gear knob (Manual only)	✗	✓	✓	✓
Tinted glass	✓	✓	✓	✓
Privacy glass: rear door, quarter & tailgate	✗	✗	✗	✓
Front centre armrest	✓	✓	✓	✓
Convenience				
10.25" High resolution LCD supervision cluster	✗	✗	✗	✓
Remote keyless entry	✓	✓	✓	✓
Dual smart keys with start button	✗	✗	✓	✓
Automatic door locking system	✗	✗	✗	✓
Trip computer with outside temperature gauge	✓	✓	✓	✓
Electric windows (front & rear)	✓	✓	✓	✓
Automatic headlamps	✗	✗	✓	✓
Rain sensing wipers	✗	✗	✓	✓
Automatic dipping rear view mirror	✗	✗	✓	✓
Idle Stop & Go system	✓	✓	✓	✓
Smart steering (manual transmission)	✓	✓	✓	✓
Drive mode (automatic transmission)	✗	✗	✗	✓
Height & reach adjustable steering wheel	✓	✓	✓	✓
Electronic cruise control	✓	✓	✓	✓
Headlight levelling system	✓	✓	✓	✓
Electrically operated & heated door mirrors	✓	✓	✓	✓
Automatic power folding door mirrors	✗	✗	✗	✓
60/40 split rear seats	✓	✓	✓	✓
Luggage cover	✗	✓	✓	✓
Luggage board/loadspace partition	✗	✗	✗	✓
Contour floor mats	✗	✓	✓	✓
In car entertainment				
DAB Radio with iPod & Bluetooth connectivity	✓	✗	✗	✗
8" touchscreen DAB radio with iPod & Bluetooth connectivity	✗	✓	✓	✓
Apple CarPlay and Android Auto	✗	✓	✓	✓
Rear view camera	✗	✓	✓	✓
USB and AUX sockets	✓	✓	✓	✓
Steering wheel mounted audio controls	✓	✓	✓	✓
Six speakers including two tweeters	✓	✓	✓	✓
Roof mounted antenna	✓	✓	✓	✓

	EX	ELX	VENTURA	ULTIMATE
Climate and heating				
Manual air conditioning	✓	✓	✓	✗
Dual-zone automatic air conditioning	✗	✗	✗	✓
Safety and security				
Dual front airbags with passenger off switch	✓	✓	✓	✓
Side airbags	✓	✓	✓	✓
Curtain airbags	✓	✓	✓	✓
Driver's knee airbag	✗	✓	✓	✓
Two stage front seatbelt pre-tensioners	✓	✓	✓	✓
Electronic Stability Programme (ESP)	✓	✓	✓	✓
Active Rollover Protection (ARP)	✓	✓	✓	✓
ABS with Electronic Brakeforce Distribution (EBD)	✓	✓	✓	✓
Forward Collision Warning (FCW)	✓	✓	✓	✓
Autonomous Emergency Braking (AEB)	✓	✓	✓	✓
Lane Departure Warning (LDW)	✓	✓	✓	✓
Lane Keeping Assist (LKA)	✓	✓	✓	✓
Traffic Sign Recognition (TSR)	✓	✓	✓	✓
Driver Attention Alert (DAA)	✓	✓	✓	✓
Front Vehicle Start Alert (FSVA)	✓	✓	✓	✓
Emergency Stop Signal (ESS)	✓	✓	✓	✓
Brake Assist System (BAS)	✓	✓	✓	✓
Hill Start Assist (HAS)	✓	✓	✓	✓
Hill Descent Control (HDC)	✓	✓	✓	✓
Safety Distance Alert (SDA)	✓	✓	✓	✓
ISOFIX fittings to outer rear seats	✓	✓	✓	✓
Alarm & immobiliser	✓	✓	✓	✓
Exterior				
16" steel wheels with covers	✓	✗	✗	✗
16" alloy wheels	✗	✓	✓	✗
18" diamond cut gunmetal alloy wheels	✗	✗	✗	✓
Piano black radiator grille	✓	✓	✓	✓
Fashion rails	✗	✓	✓	✓
Projection headlamps	✓	✓	✓	✓
Front & rear LED daytime running lights	✓	✓	✓	✓
Rear spoiler with LED stop lamp	✗	✗	✗	✓
Front fog lights (Bulb)	✗	✓	✗	✓
Triple LED front fog lights	✗	✗	✓	✓
Front and rear parking sensors	✗	✗	✓	✓
Mini spare	✗	✗	✗	✓
Tyre repair kit	✓	✓	✓	✗
Tyre pressure monitoring system	✓	✓	✓	✓

WHEEL OPTIONS



EX
16"



ELX & VENTURA
16"



ULTIMATE
18" DIAMOND CUT

TECHNICAL SPECIFICATIONS

	TIVOLI PETROL MANUAL	TIVOLI PETROL MANUAL	TIVOLI PETROL AUTOMATIC	TIVOLI DIESEL MANUAL	TIVOLI DIESEL AUTOMATIC
Engine and drivetrain					
Drivetrain	Front wheel drive				
Engine capacity (cc)	1197	1497		1597	
Engine configuration	3 cylinders	4 cylinders			
Transmission	6 speed manual	6 speed manual	6 speed automatic	6 speed manual	6 speed automatic
Fuel	Petrol			Diesel	
Exhaust system				Catalyst	
Performance					
Top speed (mph)	112		108	108	107
Maximum power (PS/rpm)	128/5000	163/5500		136/4000	
Maximum torque (Nm/rpm)	230/1750-3500	280/1500-4000	260/1500-4000	300 / 1500-3000	324/1500-2500
Max unbraked trailer load (kg)	500				
Max braked trailer load (kg)	1000		1500		
Towbar max load (kg)	60		80		
Economy & emissions - WLTP					
Regulated emission standard	Euro 6d				
CO2 emissions (g/km)	158	164	175	146	158
Fuel consumption: combined mpg	40.4	39.2	36.7	50.4	47.1
Fuel consumption: low mpg	34.0	32.8	28.2	47.1	38.7
Fuel consumption: medium mpg	44.1	42.2	38.7	54.3	49.6
Fuel consumption: high mpg	47.1	45.6	42.8	57.6	54.3
Fuel consumption: extra high mpg	36.7	36.2	35.3	45.6	43.5
Economy & emissions - NEDC					
Fuel consumption: combined mpg	47.9	42.8	40.4	56.5	52.3
Fuel consumption: urban mpg	40.9	35.3	33.2	51.4	47.9
Fuel consumption: extra urban mpg	53.3	48.7	46.3	60.1	54.3
Dimensions					
Length (mm)			4225		
Width (mm)			1810		
Height including roof rails (mm)	1613				1621
Wheelbase (mm)			2600		
Track: front/rear (mm)			1555		
Min turning radius (M)			5.3		
Overhang: front/rear (mm)			880/745		
Gross vehicle weight (KG)	1745	1850	1880	1960	1980
Kerb weight (KG)	1369	1375	1410	1465	1500
Fuel tank (litres)	47				
Running gear					
Steering	Electronic power assisted rack and pinion				
Suspension (front/rear)	MacPherson strut/independent				
Brakes (front/rear)	Vented disc/solid disc				
Wheels/tyres	205/65 R16	205/65 R16	215/50 R18	215/50 R18	215/50 R18
Insurance	Tivoli EX	Tivoli ELX	Tivoli Ventura	Tivoli Ultimate Manual	Tivoli Ultimate Auto
Group	TBA	TBA	TBA	TBA	TBA

COLOURS



Platinum Grey



Cherry Red



Silent Silver



Dandy Blue



Space Black



Grand White

INTERIORS



Black deluxe fabric



Black TPU & cloth



Black leather
(Grey, Red, Silver, and White exterior only)



Grey leather
(Blue and Black exterior only)

DIMENSIONS



1810mm



1555mm

1621mm



880mm

2600mm

745mm

4225mm



All SsangYong vehicles are covered by an industry leading 7 year or 150,000 mile warranty.



06/20

For more information please call 0333 444 1954

The information in this brochure is not binding and is subject to alteration. SsangYong reserves the right to change specifications at any time without notice. The colour and finishes reproduced in this brochure are subject to the limitations of the printing process and may vary from the actual colour and paint finish. This brochure does not constitute an offer of sale of any particular vehicle or specification. Please confirm exact specifications, prices and colour availability with your SsangYong dealer or check the SsangYong website.



SSURPRISINGLY
SSANGYONG
7 YEAR WARRANTY